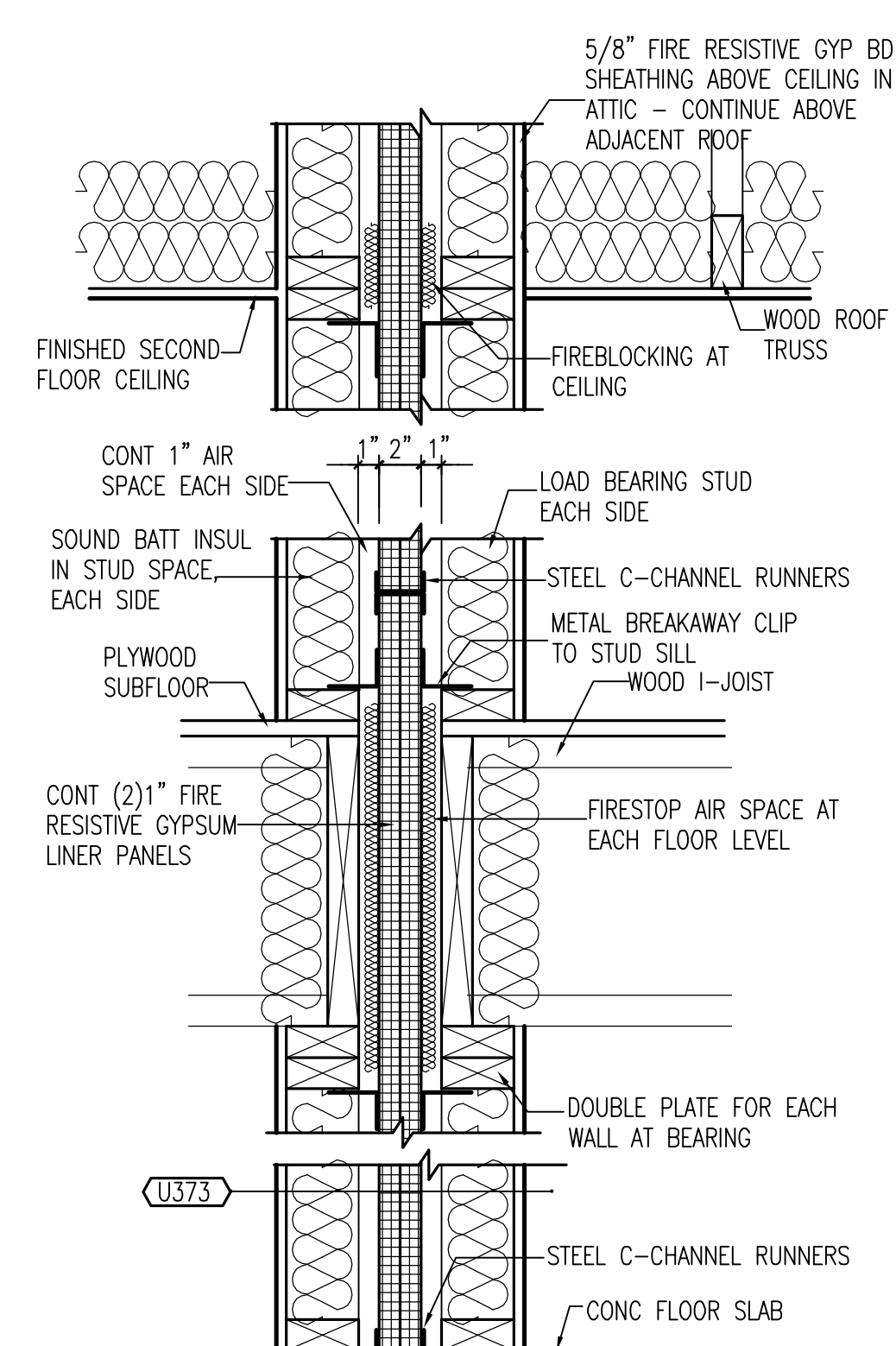
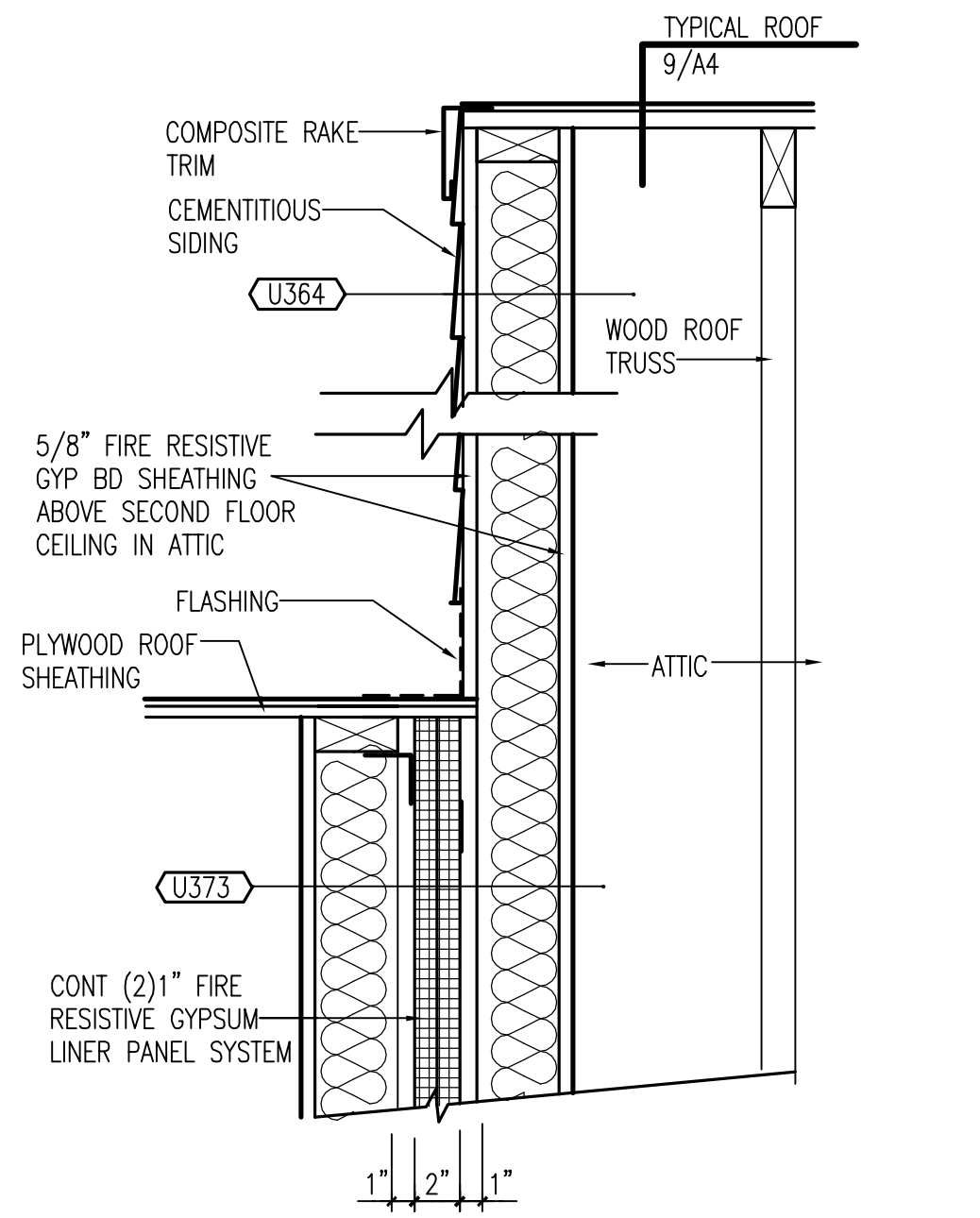


1 BASEMENT FLOOR PLAN
A1 SCALE: 1/4"=1'-0"
NORTH



2 PARTY WALL DETAIL
A1 SCALE: 1 1/2"=1'-0"

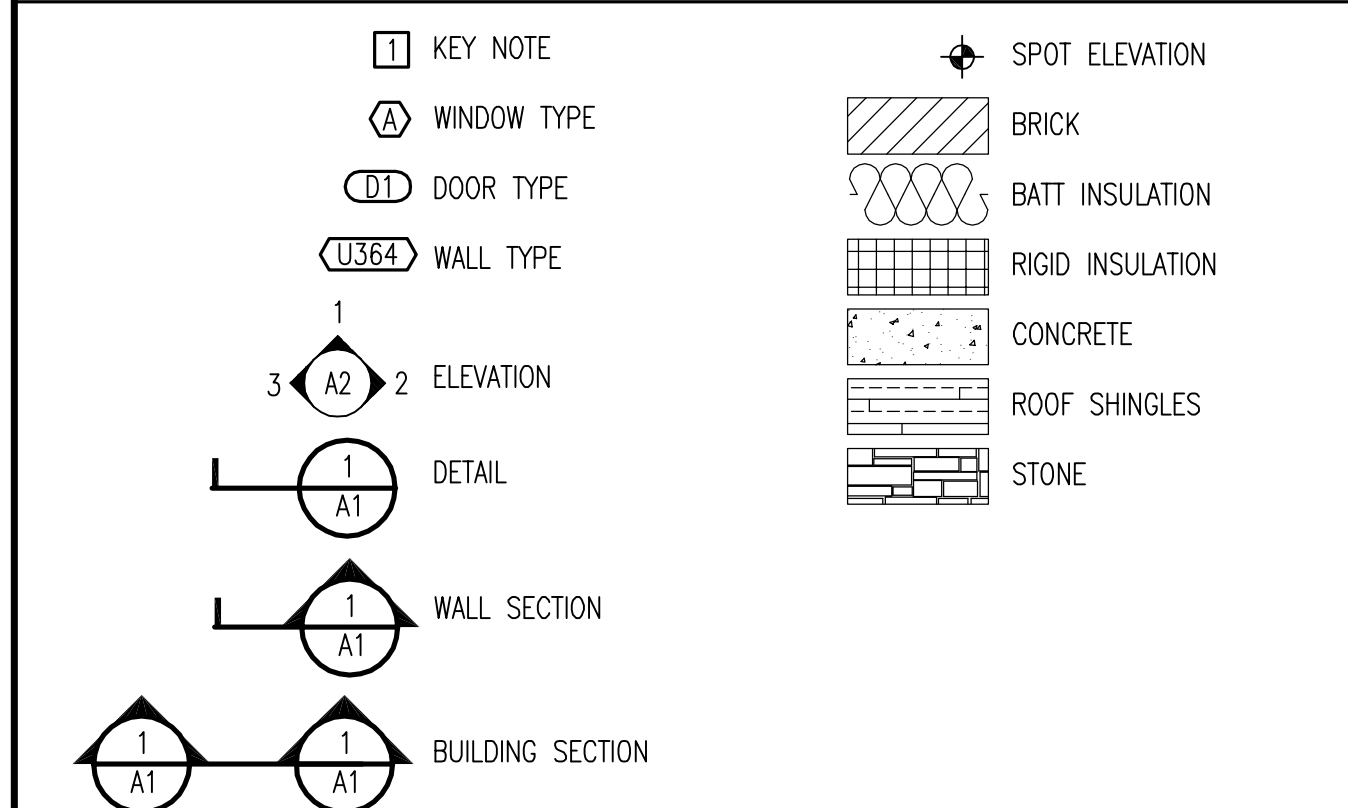


3 PARTY WALL ABOVE ROOF
A1 SCALE: 1 1/2"=1'-0"

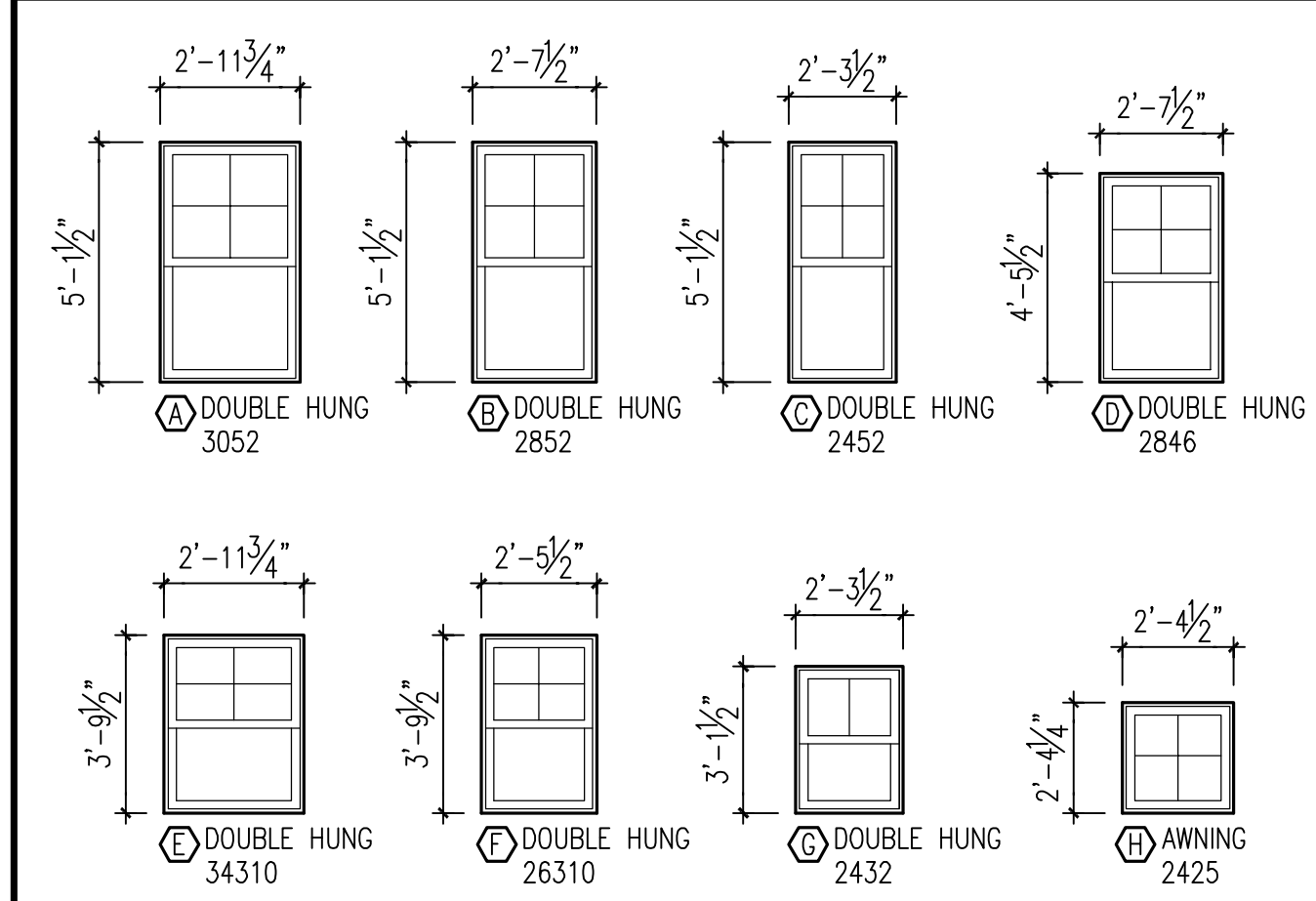
GENERAL NOTES

- DO NOT SCALE DRAWINGS. USE DIMENSIONS GIVEN.
- MASONRY DIMENSIONS ARE GIVEN NOMINAL TO FACE OF MASONRY. DIMENSIONS FOR WOOD STUDS ARE ACTUAL GIVEN TO FACE OF STUD.
- ALL DOORS AND WINDOWS SUBJECT TO HUMAN IMPACT ARE TO CONTAIN SAFETY GLAZING WITH LOCATIONS NOTED ON ELEVATION DRAWINGS.
- ALL CONCRETE EXPOSED TO EXTERIOR IS TO CONTAIN AIR ENTRAINING AGENTS.
- ALL WOOD IN DIRECT CONTACT WITH GRADE OF MASONRY MATERIALS IS TO BE TREATED FOR ROT RESISTANCE.
- PROVIDE FLASHING AT DOORS AND WINDOW HEADS AT EXTERIOR WALLS, ROOF ABUTMENTS WITH EXTERIOR WALLS, AND ROOF PENETRATIONS.
- PROVIDE SOUND INSULATION BATTS IN ALL BATHROOM AND TOILET ROOM INTERIOR PARTITIONS.
- CLOSETS ARE TO RECEIVE THE SAME FLOOR AND WALL FINISH AS THE ROOMS THEY OPEN ONTO EXCEPT AS NOTED OTHERWISE.
- PROVIDE SMOKE-CARBON MONOXIDE DETECTORS WIRED DIRECTLY TO THE ELECTRICAL SYSTEM.
- PROVIDE INSULATION IN ALL EMPTY SHIM SPACES IN EXTERIOR WALLS.
- PROVIDE 1/2" TYPE X FIRE RESISTIVE GYPSUM BOARD AT INTERIOR FINISH AT WALLS IN GARAGE. PROVIDE 5/8" TYPE X FIRE RESISTIVE GYPSUM BOARD AT INTERIOR FINISH AT CEILING IN GARAGE.

SYMBOLS



WINDOW SCHEDULE



KEY NOTES

- CLOTHES ROD AND 12" SHELF IN CLOSET.
- WALL-MOUNTED HANDRAIL AT 3'-0" ABOVE STAIR TREAD.
- 1/2" GYPSUM BOARD AND FIBERGLASS BATT INSULATION ON 2x4 STUD FURRING, TYPICAL AT PERIMETER CONCRETE FOUNDATION WALL.
- PROVIDE 1/2" GYPSUM BOARD FINISH AT UNDERSIDE OF STAIR RUN.

LIST OF DRAWINGS

- A1 FLOOR PLANS, NOTES, SYMBOLS, & SCHEDULES
- A2 FLOOR PLANS & ROOF PLAN
- A3 ELEVATIONS, BUILDING SECTIONS, & DETAILS
- A4 ELEVATIONS, WALL SECTIONS, & DETAILS
- A5 WALL SECTIONS
- A6 ELECTRICAL PLANS & WALL DESIGN SCHEDULE
- A7 ELECTRICAL PLAN
- S1 FOUNDATION PLAN, NOTES & DETAILS
- S2 FRAMING PLANS & DETAILS
- S3 BRACING PLANS & DETAILS

BUILDING DATA

BUILDING CONSTRUCTION = TYPE VB
USE CLASSIFICATION = R5

INSULATION:
WALL INSULATION = FIBERGLASS BATT WITH VAPOR BARRIER
R14 MINIMUM FOR 2x4 STUD FURRING BELOW GRADE
ROOF INSULATION = FACED FIBERGLASS BATTS, R38 MINIMUM
WINDOWS & DOORS = 0.35 MAXIMUM U FACTOR

DESIGNED FOR 2012 VIRGINIA UNIFORM STATEWIDE BUILDING CODE
REFERENCING 2012 INTERNATIONAL RESIDENTIAL CODE

ABBREVIATIONS

AC AIR CONDITIONING	PL PLATE
BIT BITUMINOUS	PLY PLYWOOD
BD BOARD	POLY POLYETHYLENE
	PSL PARALLEL STRAND LUMBER
CAB CABINET	R RISER
CL CENTER LINE	REFRIG REFRIGERATOR
CLG CEILING	REINF REINFORCED
CONC CONCRETE	RO ROUGH OPENING
CONT CONTINUOUS	SIM SIMILAR
	SQ SQUARE
D DRYER	T TREAD
DET DETAIL	T+G TONGUE AND GROOVE
DISP DISPOSAL	TYP TYPICAL
DIA DIAMETER	
DN DOWN	UNO UNLESS NOTED OTHERWISE
EA EACH	VERT VERTICAL
EL ELEVATION	VIF VERIFY IN FIELD
EQ EQUAL	
EXT EXTERIOR	W WASHER
FDN FOUNDATION	WD WOOD
FL FLOOR	WWF WELDED WIRE FABRIC
GFI GROUND FAULT INTERRUPT	
GYP GYPSUM	
HORZ HORIZONTAL	
HT HEIGHT	
INSUL INSULATION	
LVL LAMINATED VENEER LUMBER	
MAX MAXIMUM	
MIN MINIMUM	
MO MASONRY OPENING	
OC ON CENTER	
OPP OPPOSITE	

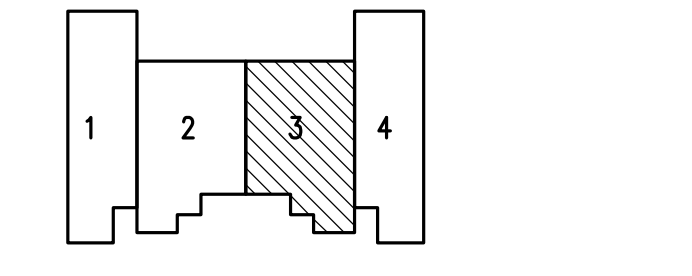
Townhouse Residence

Unit 3
2017 & 2022 South Kenmore Street
Arlington, Virginia 22204

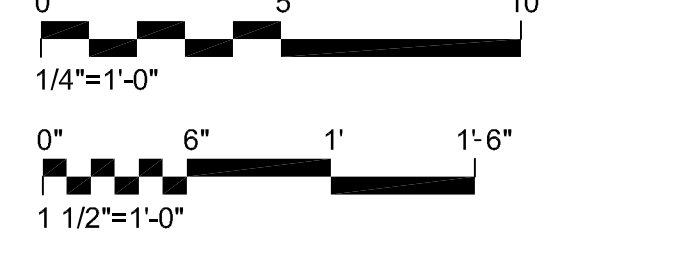
NOVITSKE ARCHITECTS

201 North Fairfax Street • Suite 33
Alexandria VA 22314
703 535 7899 • 703 535 8840 fax

key plan



graphic scales



project: 24706
phase: Preliminary - Not for Construction
date: 16 February 2018
revisions:

**Floor Plans, Notes,
Symbols, & Schedules**