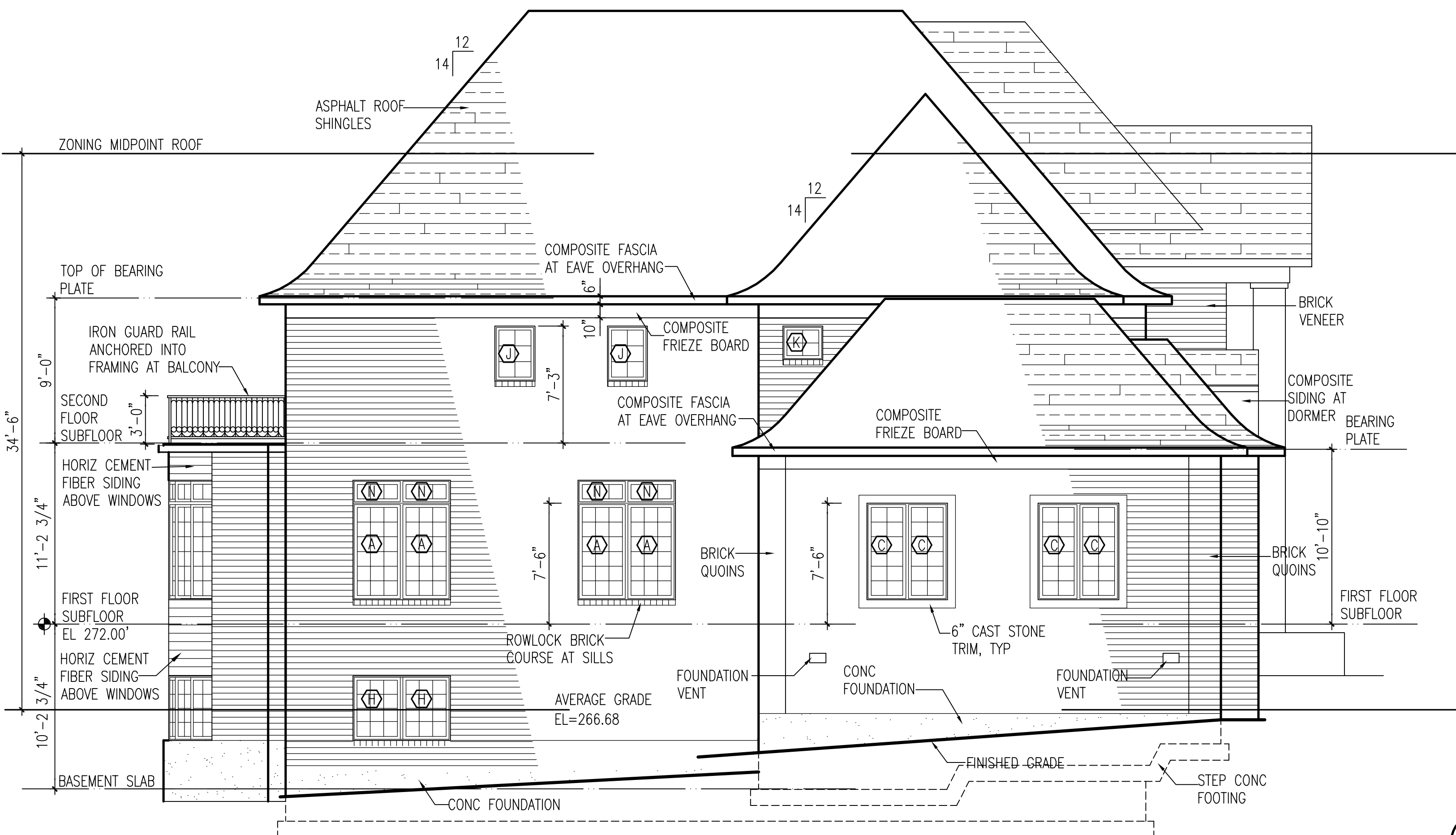
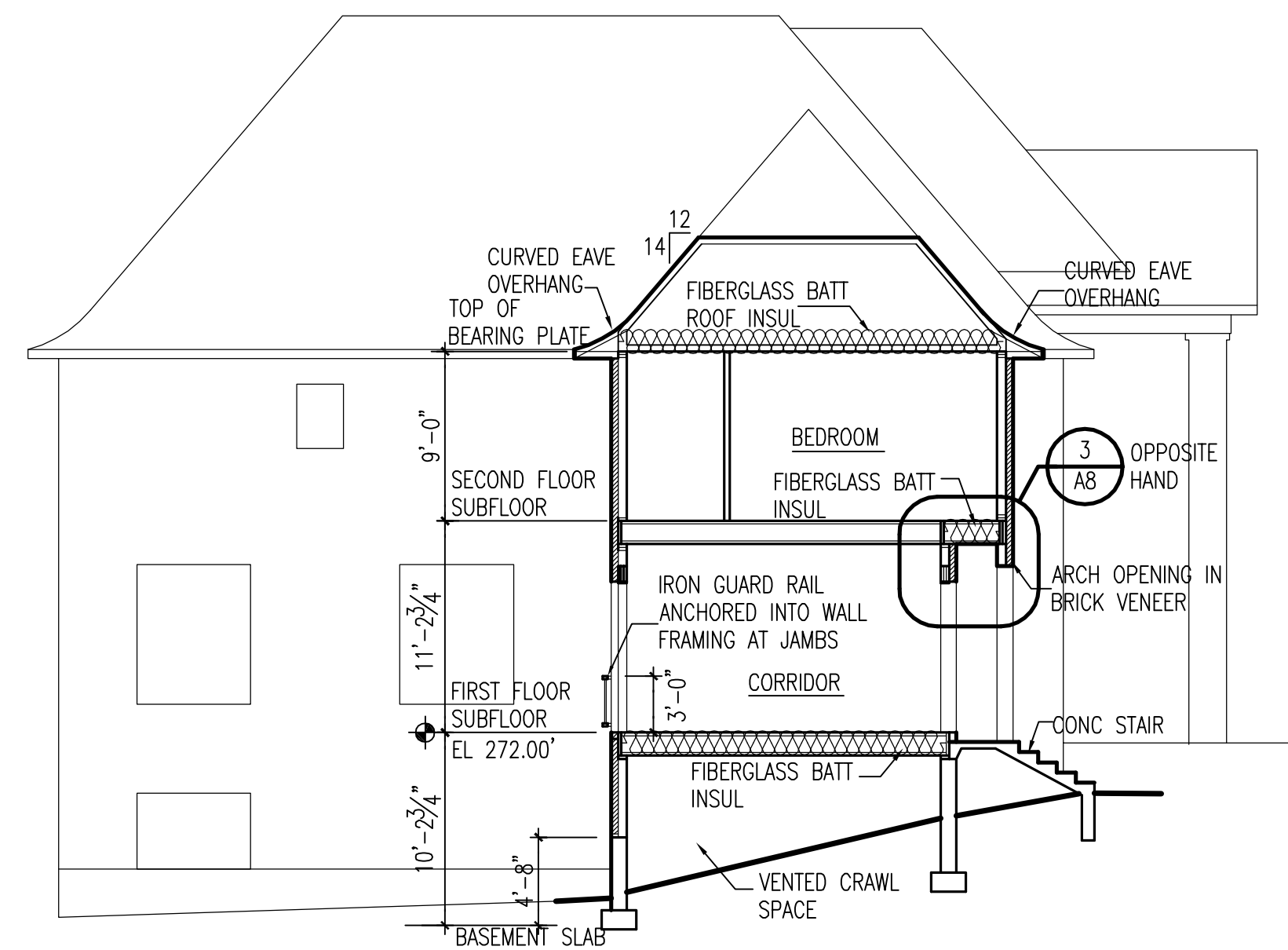


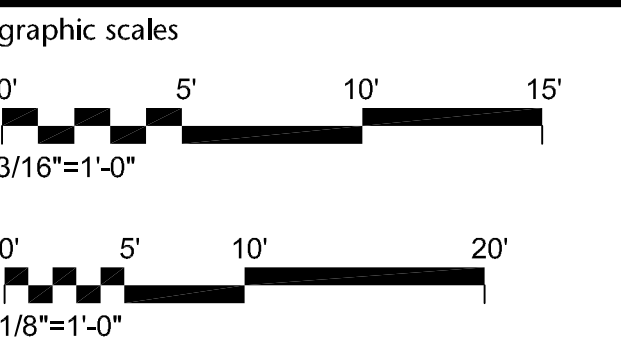
1 WEST ELEVATION
SCALE: 3/16"=1'-0" BACK



2 SOUTH ELEVATION
SCALE: 3/16"=1'-0" LEFT



3 SECTION LOOKING NORTH
SCALE: 1/8"=1'-0"



project:	24712
phase:	Permit
date:	8 November 2018
revisions:	13 November 2018
	3 December 2018