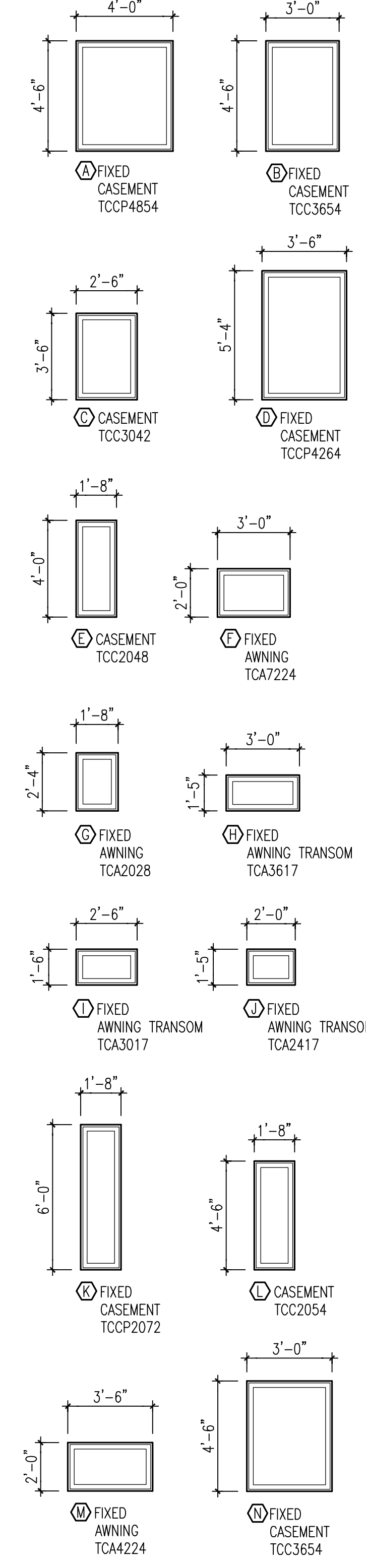


KEY NOTES

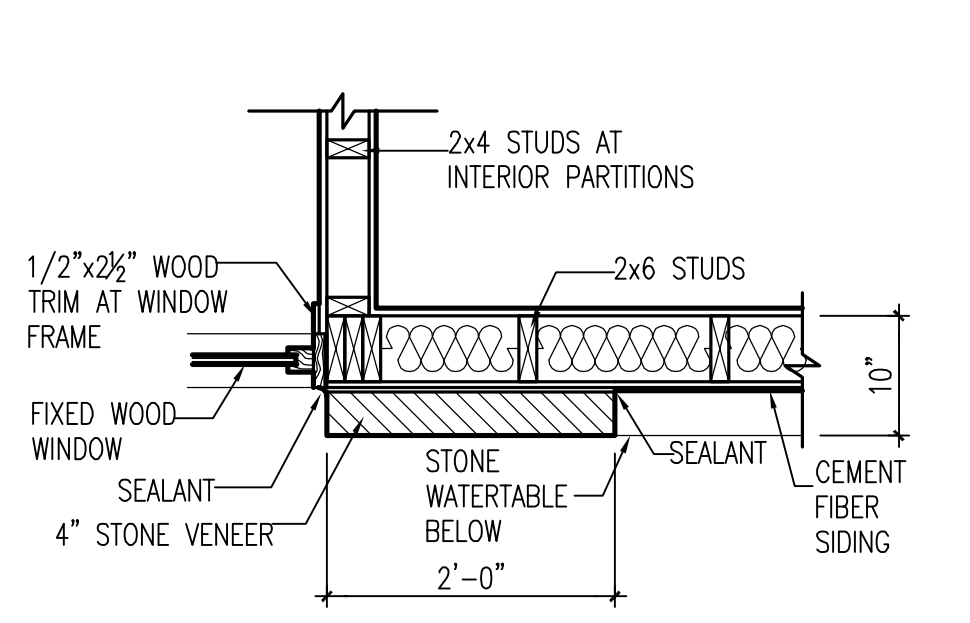
- 1 SEMI-RECESSED WALL-MOUNTED FIRE EXTINGUISHER AND CABINET, 2.5 GALLON CAPACITY FOR DRY CHEMICAL CLASS A FIRE.
- 2 PROVIDE ALUMINUM ANGLE EDGE STRIP BETWEEN CERAMIC TILE AND CARPET AT FLOOR.
- 3 PROVIDE FIBERGLASS BATT SOUND INSULATION IN OFFICE WALLS, TOILET ROOM WALLS, AND WALLS BETWEEN FITNESS CENTER AND LOBBY.
- 4 NOT USED.
- 5 DOWNSPOUT TO GRADE.
- 6 CONTINUE COMPOSITE BOARD SIDING AT SIDE OF DORMER TO MEET DORMER ROOF.
- 7 DIRECT VENT FIREPLACE UNIT TO VENT TO EXTERIOR WALL.

WINDOW SCHEDULE

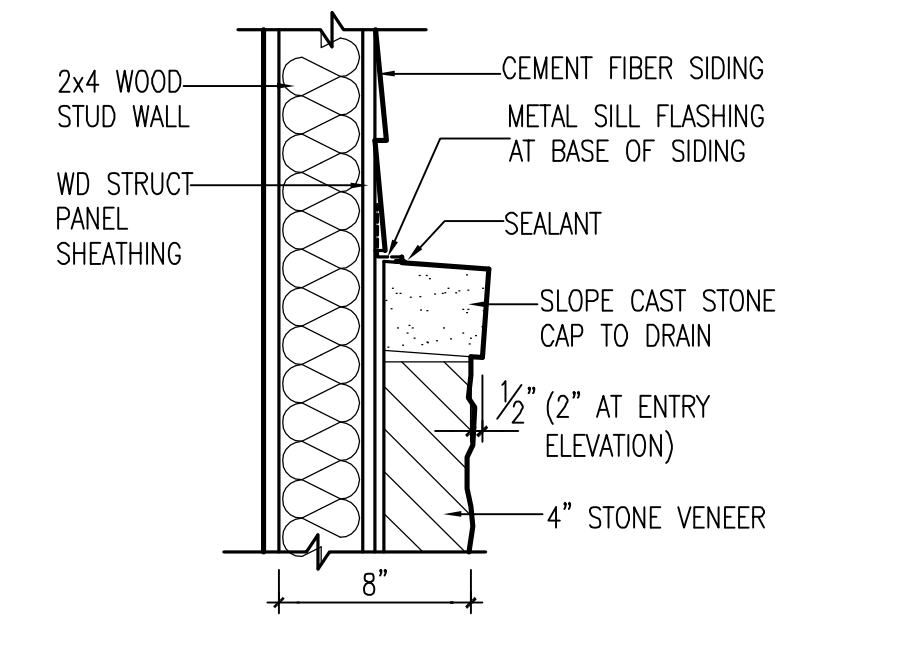
MODEL NUMBERS = JELD WEN TRADITIONS PLUS CLAD WOOD WINDOWS.
 CLADDING COLOR = DESSERT SAND
 WINDOWS ON INTERIOR WALL AT VESTIBULE = SINGLE PANE GLAZING WOOD (NO CLADDING)



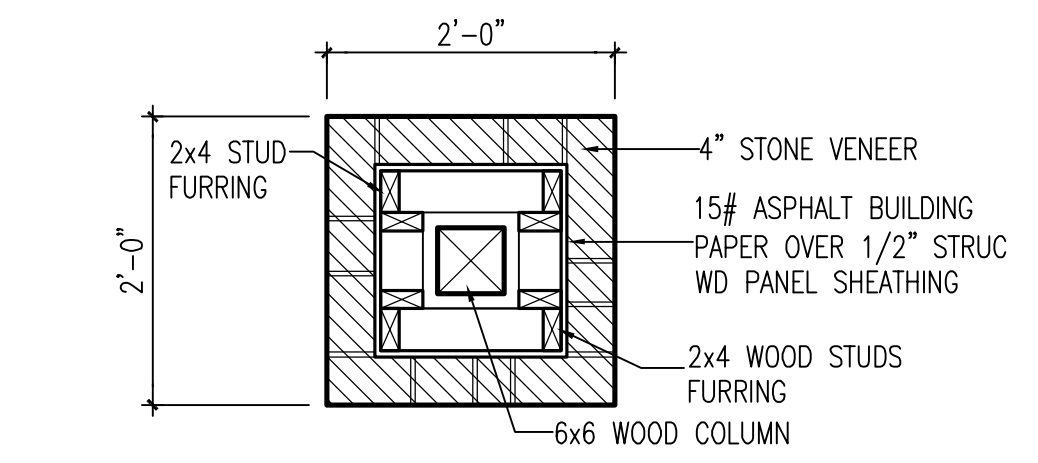
1 FLOOR PLAN
 A1 SCALE: 1/4"=1'-0"
 NORTH



2 PILASTER PLAN DETAIL
 A1 SCALE: 3/4"=1'-0"



4 WATERTABLE CAP DETAIL
 A1 SCALE: 1 1/2"=1'-0"



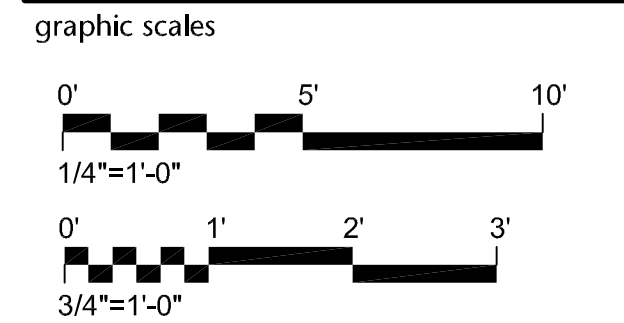
3 COLUMN PLAN DETAIL
 A1 SCALE: 3/4"=1'-0"

LEASING OFFICE CLUB HOUSE
 Walker Mill Apartments
 1926 Rochelle Avenue
 District Heights, Maryland 20747

FEDERAL CAPITAL PARTNERS
 5425 Wisconsin Avenue • Suite 202
 Chevy Chase MD 20815
 240 395 2000

NOVITSKE ARCHITECTS
 201 North Fairfax Street • Suite 33
 Alexandria VA 22314
 703 535 7899 • 703 535 8840 fax

I CERTIFY THAT THESE DOCUMENTS WERE PREPARED BY OR APPROVED BY ME AND THAT I AM A DULY LICENSED ARCHITECT UNDER THE LAWS OF THE STATE OF MARYLAND, LICENSE NUMBER 0013269, EXPIRATION DATE SEPT 27, 2018.



project: 21418
 phase: Permit
 date: 17 April 2015
 revisions: 10 June 2016 - Plan mirrored
 13 July 2017 - Roof revision
 27 September 2017

Floor Plans & Details