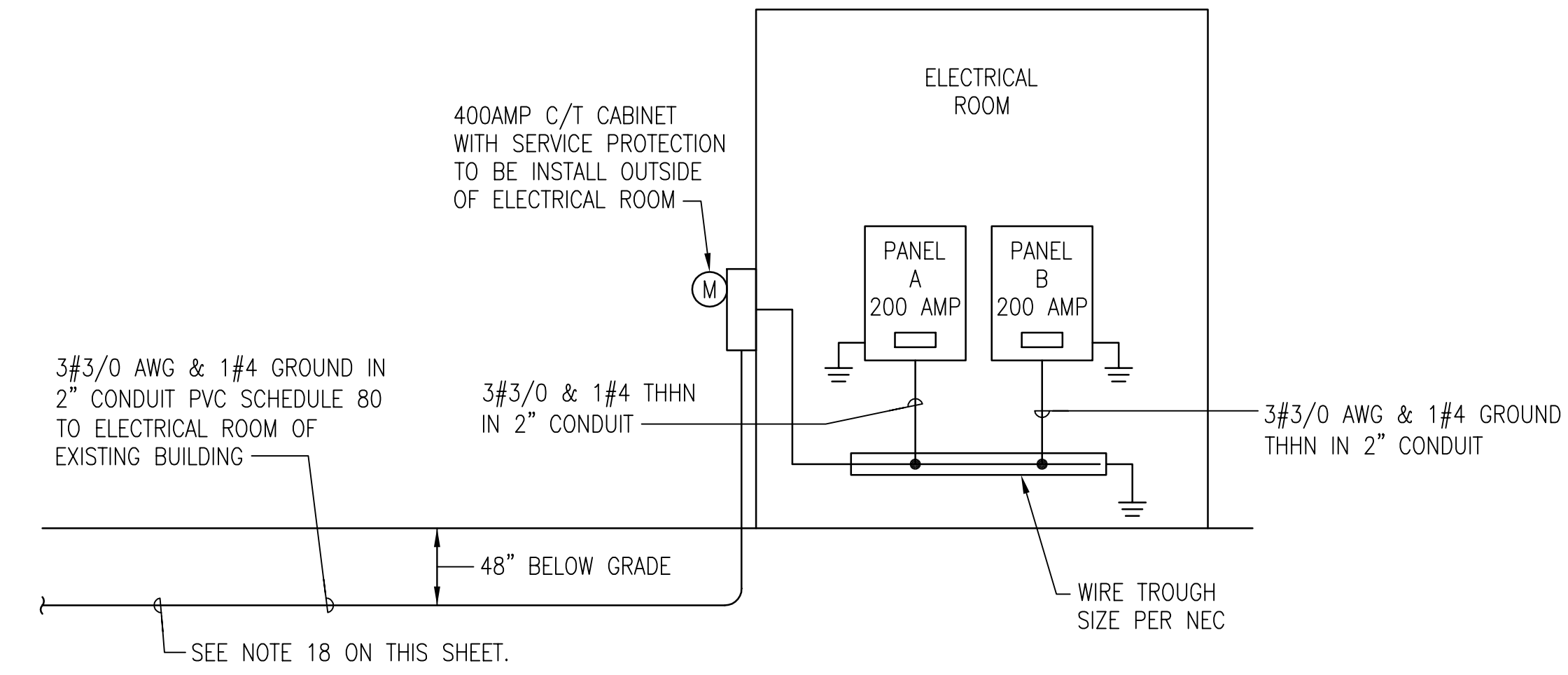


GENERAL NOTES

- ALL WORK AND MATERIALS SHALL MEET THE REQUIREMENTS OF THE NATIONAL ELECTRICAL CODE AND ALL APPLICABLE STATE AND LOCAL CODES AND ORDINANCES.
- DRAWING ARE DIAGRAMMATIC AND INDICATE GENERAL ARRANGEMENT OF SYSTEMS AND WORK. FOLLOW DRAWINGS IN LAYING OUT WORK.
- SECURE ALL SUPPORTS TO BUILDING STRUCTURE AS SPECIFIED ON RACEWAYS. SUPPORT HORIZONTAL RUNS OF METALLIC RACEWAYS NOT MORE THAN 10 FEET APART. SUPPORT RACEWAY RISER AT EACH FLOOR LEVEL. RUN EXPOSED RACEWAYS PARALLEL OR AT RIGHT ANGLES TO WALL.
- PASS RACEWAYS OVER WATER STEAM OR OTHER PIPING WHEN PULL BOXES ARE NOT REQUIRED. NO RACEWAY WITHIN 3 INCHES OF STEAM OR HOT WATER PIPES OR APPLIANCES, EXCEPT CROSSING WHERE RACEWAY SHALL BE AT LEAST ONE INCH FROM PIPE COVER.
- CUT CONDUIT ENDS SQUARE REAM, SMOOTH, PAINT MALE THREADS OF FIELD THREADED RACEWAYS WITH GRAPHITE BASE PIPE COMPOUND. DRAW UP TIGHT WITH RACEWAY COUPLINGS.
- HORIZONTAL OR CROSS RUNS IN PARTITIONS AND WALLS NOT PERMITTED.
- LEAVE WIRE SUFFICIENTLY LONG TO PERMIT MAKING FINAL CONNECTIONS. IN RACEWAYS OVER 10 FEET IN WHICH WIRING IS NOT INSTALLED, FURNISH FISH WIRE.
- PULL NO THERMOPLASTIC WIRES AT TEMPERATURES LOWER THAN 32°F (0°C). PROVIDE CABLE SUPPORTS FOR WIRE IN RISER CONDUITS AS REQUIRED BY CODE.
- THE CIRCUIT NUMBERS ARE FOR IDENTIFICATION PURPOSES AND THE CONTRACTOR SHALL BE RESPONSIBLE FOR CORRECTLY PHASING THE CIRCUITS IN THE PLANS. HOMERUNS OF SIMILAR SINGLE PHASE CIRCUITS MAY BE COMBINED IN ONE CIRCUIT WITH COMMON NEUTRAL WHERE APPLICABLE. ON COMPLETION OF THE BUILDING THE CONTRACTOR SHALL BALANCE THE PANEL LOAD UNDER NORMAL OPERATING CONDITIONS.
- PROVIDE SEPARATE RACEWAYS FOR CONDUCTORS OF NORMAL AND EMERGENCY CIRCUITS. BOXES: PROVIDE BARRIERS BETWEEN EMERGENCY AND NORMAL WIRING.
- INDICATED LOCATIONS FOR LOCAL WALL SWITCHES ARE SUBJECT TO MODIFICATIONS. AT OR NEAR DOOR, INSTALL SWITCH ON SIDE OPPOSITE HINGE, VERIFY FINAL DOOR HINGE LOCATED IN FIELD PRIOR TO SWITCH OUTLETS INSTALLATION.
- VERIFY LOCATIONS OF OUTLETS AND SWITCHES IN FINISHED ROOMS WITH ARCHITECTURAL DRAWINGS OF INTERIOR DETAILS AND FINISH. IN CENTERING OUTLETS, AND LOCATING BOXES AND OUTLETS, ALLOW FOR OVERHEAD PIPES, DUCTS AND MECHANICAL EQUIPMENT VARIATIONS IN FIREPROOFING, AND PLASTERING WINDOW AND DOOR TRIM, PANELING HUNG CEILING, AND THE LIKE, AND CORRECT ANY INACCURACY RESULTING FROM FAILURE TO DO SO WITHOUT THE EXPENSES OF THE OWNER.
- WHERE CEILING GRID LAYOUTS ARE INDICATED ON THE PLANS, THEY ARE FOR CONVENIENCE ONLY. THE ELECTRICAL CONTRACTOR SHALL COORDINATE THE LIGHTING FIXTURE LAYOUT WITH THE GENERAL CONTRACTOR, THE CEILING SYSTEM CONTRACTOR AND THE MECHANICAL CONTRACTOR BEFORE THE CEILING GRID, AIR OUTLETS OR LIGHTS ARE INSTALLED.
- WIRE COLOR CODING: AS PER CODE. WHERE COLOR-CODED CABLE IS NOT AVAILABLE, CLARIFY IN WRITING AND REQUEST PERMISSION FOR OVERLAP COLOR TAPING CONDUCTORS (MINIMUM LENGTH 6") IN ACCESSIBLE LOCATIONS. COLOR CODING, ONCE SELECTED, MUST BE USED CONSISTENTLY FOR THE ENTIRE PROJECT.
- ALL CONDUCTORS SHALL BE COPPER THHN OR THWN WITH MINIMUM SIZE OF #12 UNLESS OTHERWISE NOTED.
- WHERE 20 AMPERE BRANCH CIRCUITS EXCEED 80 FEET IN LENGTH FROM THE PANELBOARD TO THE FIRST OUTLET, PROVIDE HOMERUN OF #10 AWC OR LARGER.
- CONDUIT SIZE SHALL BE EQUAL TO OR EXCEED THE MINIMUM REQUIREMENTS. ALL CONDUITS SHALL BE GALVANIZED STEEL FOR ALL MAIN FEEDERS MINIMUM SIZE OF 3/4" AND FOR BRANCH CIRCUITS UP 2" EMT UNLESS OTHERWISE NOTED.
- CONTRACTOR MUST PROVIDE AND INSTALL FIVE FEET, 2-3" CONDUITS FROM C/T CABINET FROM THE BUILDING AND CAP FOR FUTURE EXTENSION.

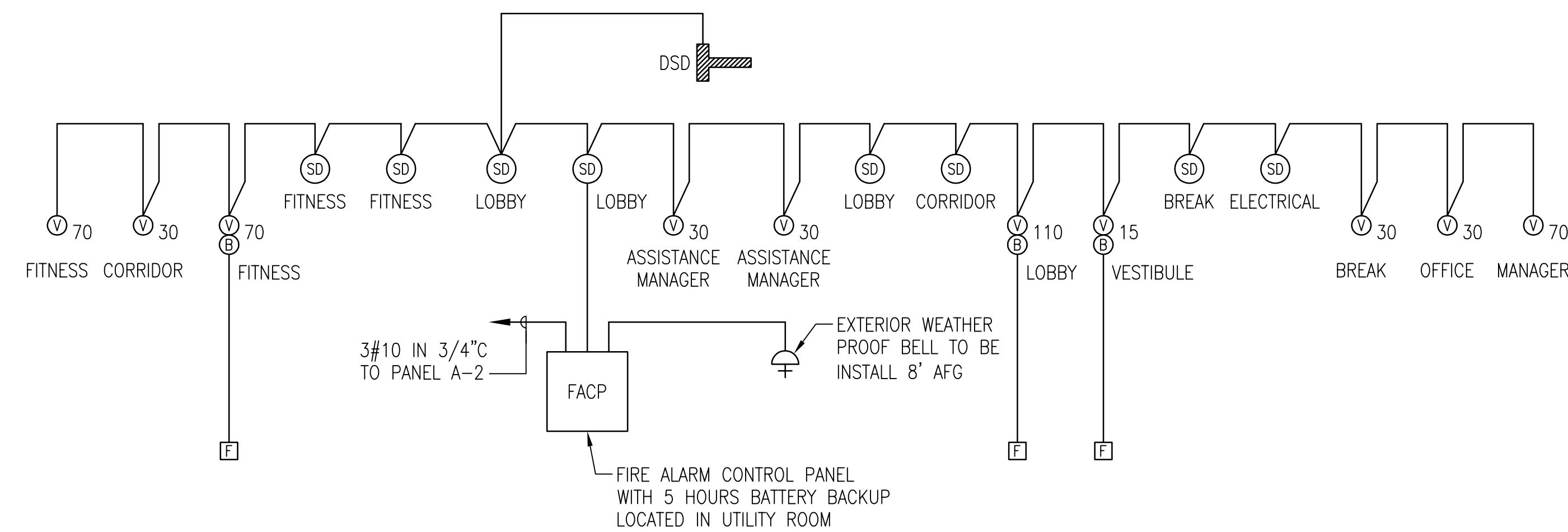
SYMBOL LIST

	NEW FLUORESCENT LIGHT ON EMERGENCY CIRCUIT
	NEW/RELOCATED FLUORESCENT LIGHT FIXTURE
	DOWN LIGHT FIXTURE
	NEW EXIST LIGHT FIXTURE
	NEW BRANCH CIRCUIT
	NEW HOME RUN TO THE EXISTING PANELBOARD. HASH MARK INDICATE NUMBER OF WIRES CHECK MARK INDICATES THE GROUND CONDUCTOR. NUMBERS OF ARROW INDICATED NUMBER OF CIRCUIT.
	SINGLE LIGHT SWITCH.
	FLOOR MOUNTED RECEPTACLE 20AMP, 1Ø, 120V
	DUPLEX RECEPTACLE 20AMP, 1Ø, 120V
	TELEPHONE OUTLET
	NEW DATA COMPUTER OUTLET
	SMOKE DETECTOR
	FIRE ALARM BELL
	FIRE ALARM PULL STATION
	NEW VISUAL LIGHT
	DUCT SMOKE DETECTOR
	10" WEATHER PROOF FIRE ALARM BELL TO BE INSTALL 10' AFG
	DUPLEX RECEPTACLE 20AMP, 1Ø, 120V LOCATED IN CEILING SPACE
	LIGHT SENSOR



ELECTRICAL POWER RISER DIAGRAM

SCALE: NOT TO SCALE



FIRE ALARM RISER DIAGRAM

SCALE: NOT TO SCALE

LIGHTING FIXTURE SCHEDULE

SYMBOL	MOUNTING	LAMP	MANUFACTURER	DESCRIPTION	LOCATION	VOLTS	REMARKS	NO OF FIXTURE	POWER CONSUMPTION PER FIXTURE
	RECESSED	L35 LED	FOCAL POINT	FAML-24-ACR-LLT-L35-120-G1-AR-WH	AS SHOWN ON DWG.	120	SELECTED BY ARCHITECT CORE LITE SERIES	20	66
	SURFACE WALL MOUNTED	32W T8	DECO LIGHTING	DIP-WALL-WP SX32-120V-1S	BATHROOM	120	SELECTED BY ARCHITECT/DESIGNER	2	60
	SURFACE	2-32W T8	LITHONIA	SB-232-120-GEB10	AS SHOWN ON DWG.	120	-	2	64
	NOT USED	-	-	-	-	-	-	-	-
	SURFACE	N1212	LITHONIA	D-S-AL-1/2R-20-AA	AS SHOWN ON DWG.	120	RED ON WHITE BACKGROUND	6	24
	SURFACE	DSN1212	LITHONIA	ELM10	AS SHOWN ON DWG.	120	-	3	45
	NOT USED	-	-	-	-	-	-	-	-
	RECESSED	9.5W LED WARM WHITE	GOTHAM ARCHITECT DOWNLIGHT	EVO-30/22-BAR-120	LOBBY	120	SELECTED BY ARCHITECT/DESIGNER	26	15
	RECESSED	2128DTT	LITHONIA	LCF-2128DTT-9RWCHL-FOL-120V-8RW	AS SHOWN ON DWG.	120	SELECTED BY ARCHITECT/DESIGNER	6	32
	CHANDELIER	12-25 FLUORESCENT	POSSINI EURO	EUX9884-93331	LOBBY	120	SELECTED BY ARCHITECT/DESIGNER	1	300
	SURFACE	LED LAMP	LITHONIA	WSTLED-210A-700/40K-SR2-120	AS SHOWN ON DWG.	120	NO EMERGENCY BATTERY	5	42
	NOT USED	-	-	-	-	-	-	-	-
	RECESSED	13W LED WARM WHITE	MP LIGHTING	L141-IC-ND-W35-45-S-R-1-W	LOBBY	-	SELECTED BY ARCHITECT/DESIGNER	4	15

LEASING OFFICE
CLUB HOUSE
Walker Mill Apartments

1926 Rochelle Avenue
Forestville, Maryland 20747

FEDERAL CAPITAL PARTNERS

5425 Wisconsin Avenue • Suite 202
Chevy Chase MD 20815
240 395 2000

NOVITSKE ARCHITECTS

201 North Fairfax Street • Suite 33
Alexandria VA 22314
703 535 7899 • 703 535 8840 fax



14415 MARINE DRIVE, SILVER SPRING MD. 20905
TEL: (301) 989-9142 FAX: (301) 989-0830
E-MAIL: massoud@ncengineers.com

I CERTIFY THAT THESE DOCUMENTS WERE PREPARED BY OR APPROVED BY ME AND THAT I AM A DULY LICENSED PROFESSIONAL ENGINEER UNDER THE LAWS OF THE STATE OF MARYLAND.
LICENSE NUMBER: 16869
EXPIRATION DATE: March 25, 2016

graphic scales

project: 21418
phase: Permit
date: 17 April 2015
revisions: 6/10/2016 WORD OF ATTIC IS CHANGE TO CEILING SPACE

SYMBOLS, SCHEDULE,
NOTES & RISER DIAGRAMS

E1