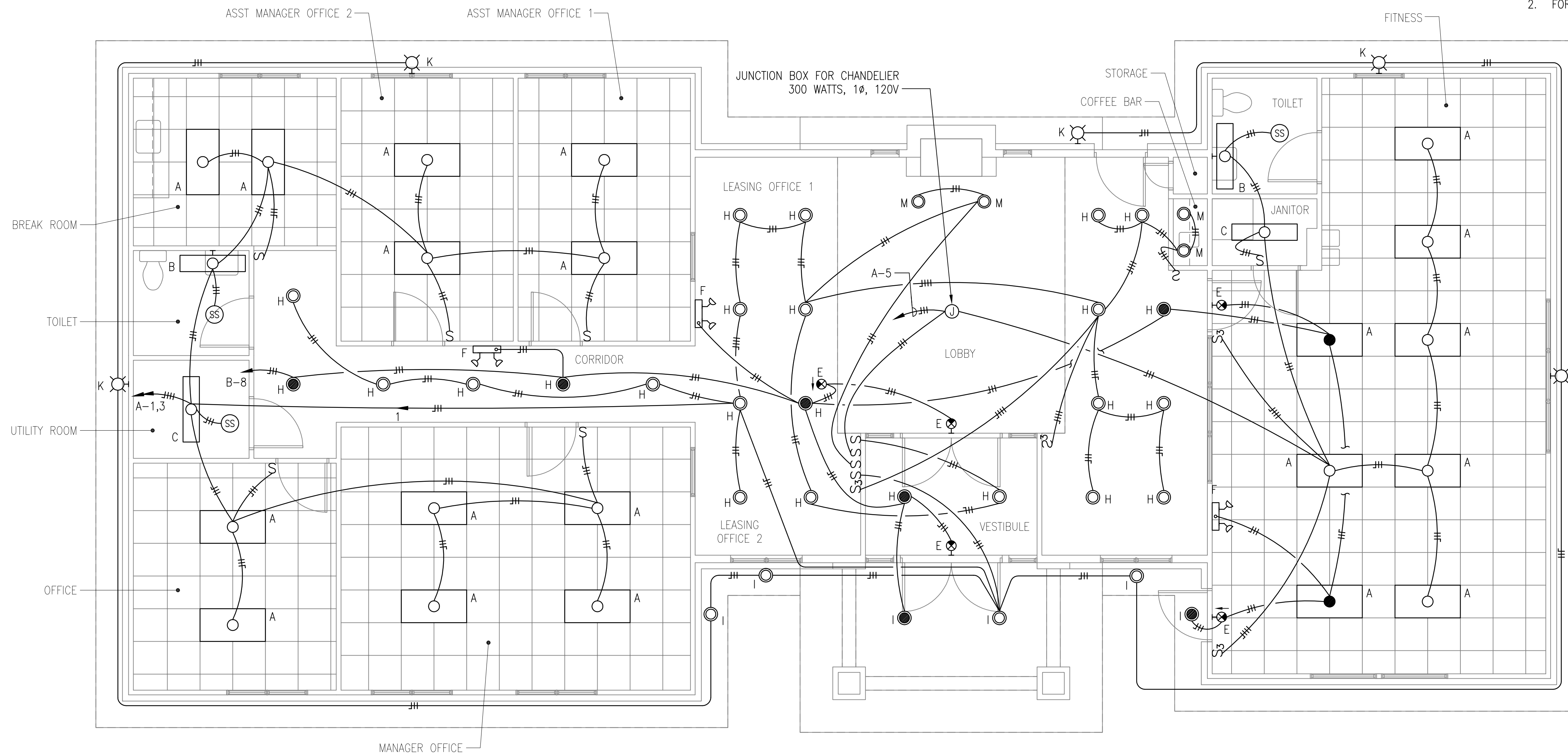


PLAN NOTES

- ALL EXTERIOR LIGHT FIXTURES SHALL BE EQUIPPED WITH PHOTOCELL.
- FOR PANEL 'A' SCHEDULE SEE DRAWING E4.



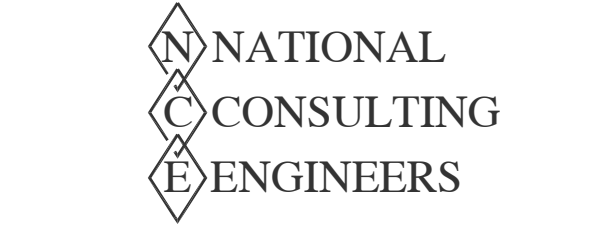
1 LIGHTING PLAN
 E5 SCALE: 1/4"=1'-0"
 NORTH

VOLTS 120/240V, 1Ø, 3W+1GND												FEED BOTTOM					
BUS 200 AMP												MTG SURFACE					
MAIN 200 AMP												LOC ELECTRICAL ROOM					
CKT NO.	SERVING	TRIP FRAME	CONDUCTOR SIZE	CONDUIT SIZE	LOAD			CB	CB	LOAD			CONDUCTOR SIZE	CONDUIT SIZE	FRAME TRIP	SERVING	CKT NO.
					PH.A	PH.B	PH.C			PH.A	PH.B	PH.C					
1	PRINTER	20 100	#12	3/4"	1200					1200			#12	3/4"	100 20	REC IN BREAK	2
3	REC IN ASST MANAGER				1200					1200						GARBAGE DISPOSAL	4
5	REC IN BREAK				1200					1200						REC IN BREAK	6
7	REFRIGERATOR	20								445						EMERGENCY LTG	8
9	KEY SYSTEM PANEL	20			800					500						FIRE ALARM SEE NOTE 1	10
11					800									20		SPARE	12
13	LOBBY FLOOR REC				1200												14
15	SPARE																16
17	AC-1	20	#12	3/4"	360					456			#12	3/4"	20	AC-2	18
19	CU-1	60	#6	1"	3408					2952	456		#8	1"	50	CU-2	20
21	SPARE	20												20		SPARE	22
23																	24
25																	26
27																	28
29																	30
31																	32
33																	34
35																	36
37																	38
SUBTOTAL LOAD PER PHASE					8168	6968				6308	5064						SUBTOTAL LOAD PER PHASE
TOTAL LOAD PER PHASE			14476	12032													
CONTINUOUS LOAD 26500 X 1.25 = 26500 W												NOTE: PROVIDE CAP AND LOCK FOR CIRCUITS #8 AND #10.					
10% SPARE + OTHER LOAD = 2650 W																	
TOTAL LOAD = 29150 KW = 121.42 AMPS												A.I.C. = 10,000					

LEASING OFFICE CLUB HOUSE
 Walker Mill Apartments
 1926 Rochelle Avenue
 Forestville, Maryland 20747

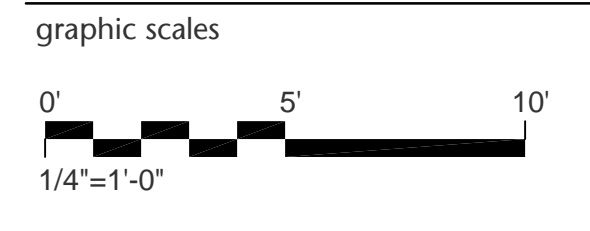
FEDERAL CAPITAL PARTNERS
 5425 Wisconsin Avenue • Suite 202
 Chevy Chase MD 20815
 240 395 2000

NOVITSKE ARCHITECTS
 201 North Fairfax Street • Suite 33
 Alexandria VA 22314
 703 535 7899 • 703 535 8840 fax



14415 MARINE DRIVE, SILVER SPRING MD. 20905
 TEL: (301) 989-9142 FAX: (301) 989-0830
 E-MAIL: massoud@nceengineers.com

I CERTIFY THAT THESE DOCUMENTS WERE PREPARED BY OR APPROVED BY ME AND THAT I AM A DULY LICENSED PROFESSIONAL ENGINEER UNDER THE LAWS OF THE STATE OF MARYLAND.
 LICENSE NUMBER: 16869
 EXPIRATION DATE: March 25, 2016



project: 21418
 phase: Permit
 date: 17 April 2015
 revisions:

LIGHTING PLAN