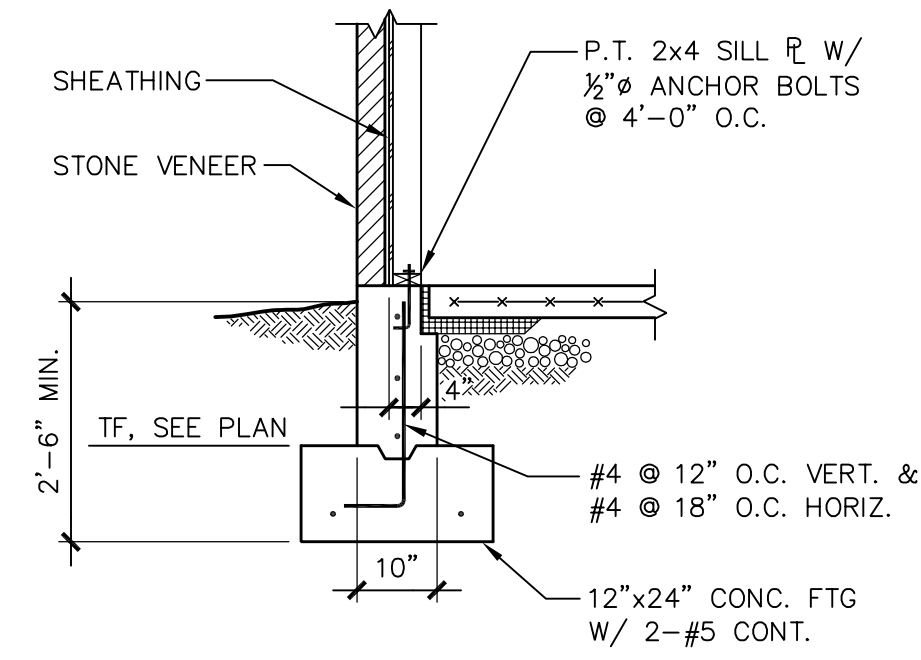
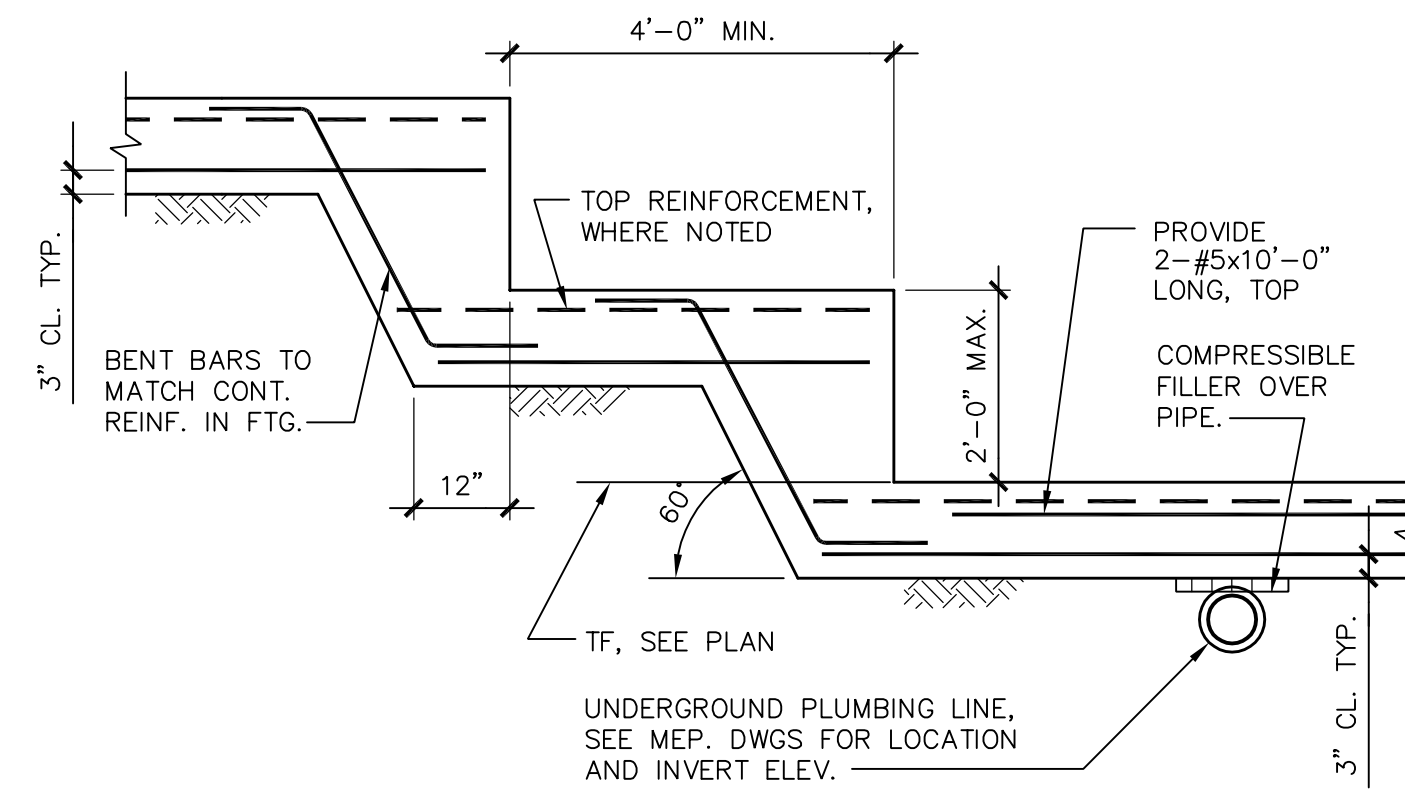


TYPICAL INTERIOR BEARING WALL

SECTION 3
SCALE: 3/4" = 1'-0"



SECTION 2
SCALE: 1/2" = 1'-0"

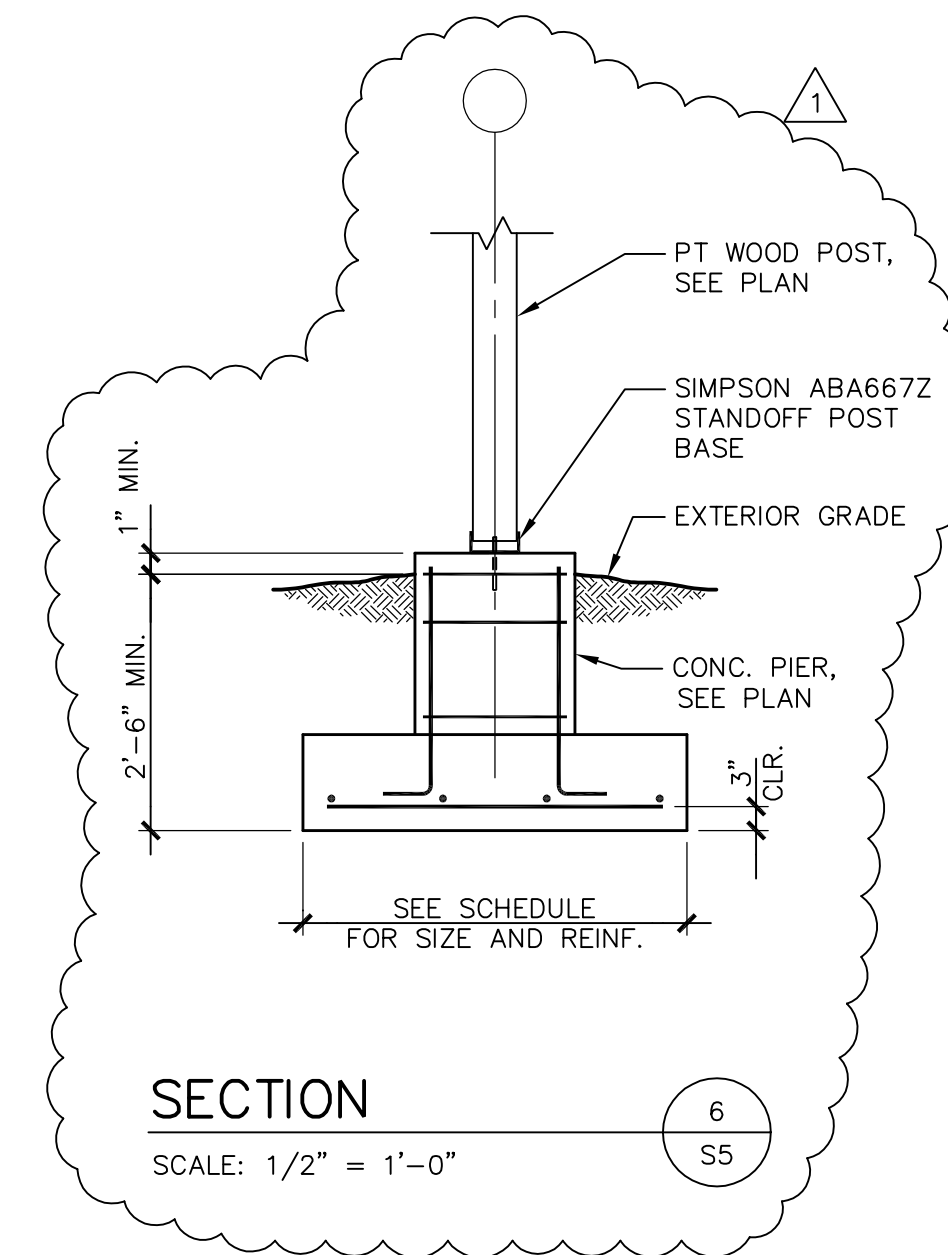


TYPICAL FOOTING STEP (F.S.)

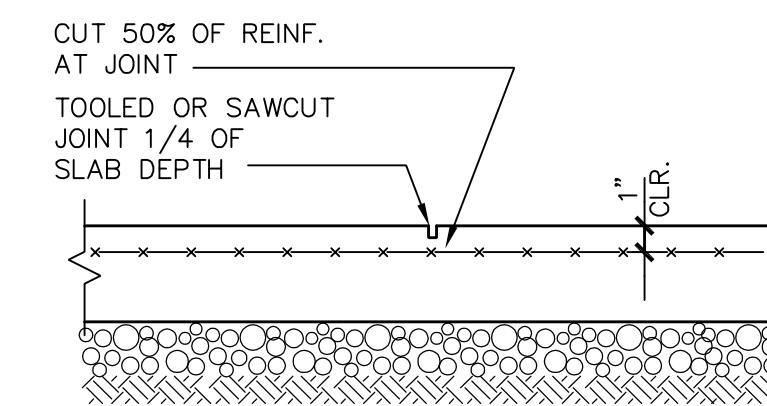
SECTION 1
NOT TO SCALE

FOOTING SCHEDULE			
MARK	SIZE	BOTTOM REINFORCING	REMARKS
F1	3'-0"x3'-0"x12"	3-#5 E.W.	

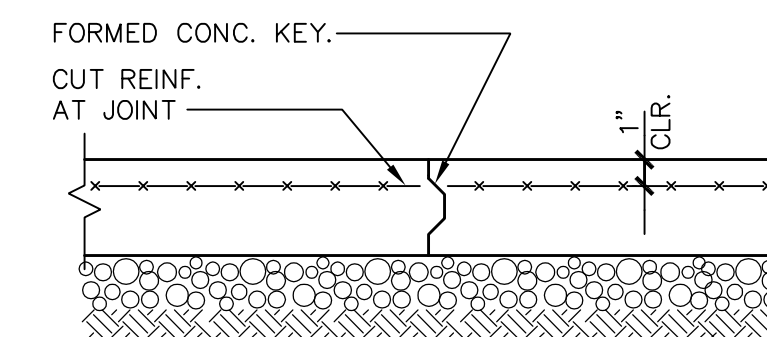
PIER SCHEDULE				
MARK	SIZE	REINFORCING		REMARKS
		VERTICAL	TIES	
P1	24x24	4-#8	#3 @ 12" O.C.	



SECTION 6
SCALE: 1/2" = 1'-0"



TYPICAL SLAB CONTROL JOINT



TYPICAL SLAB CONSTRUCTION JOINT

SECTION 5
NOT TO SCALE

LEASING OFFICE
CLUB HOUSE
Walker Mill Apartments

1926 Rochelle Avenue
District Heights, Maryland 20747

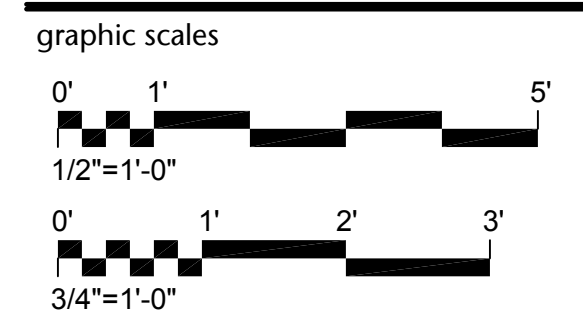
FEDERAL CAPITAL PARTNERS

5425 Wisconsin Avenue • Suite 202
Chevy Chase MD 20815
240 395 2000

NOVITSKE ARCHITECTS

201 North Fairfax Street • Suite 33
Alexandria VA 22314
703 535 7899 • 703 535 8840 fax

EHLERT BRYAN
consulting structural engineers
1451 Dolley Madison Blvd, Suite 220
McLean, VA 22101-3812
(703) 827-9552
Fax (703) 356-2031
www.ehert-bryan.com



project: 21418
phase: Permit Revisions
date: 10 June 2016
revisions: Reviewer Response

SECTIONS

S5

EB#1450158

Professional Certification. I, Jason B. Sparrow, hereby certify that these documents were prepared or approved by me, and that I am a duly licensed professional engineer under the laws of State of Maryland, License no. 34075, Expiration Date: 02/11/17.